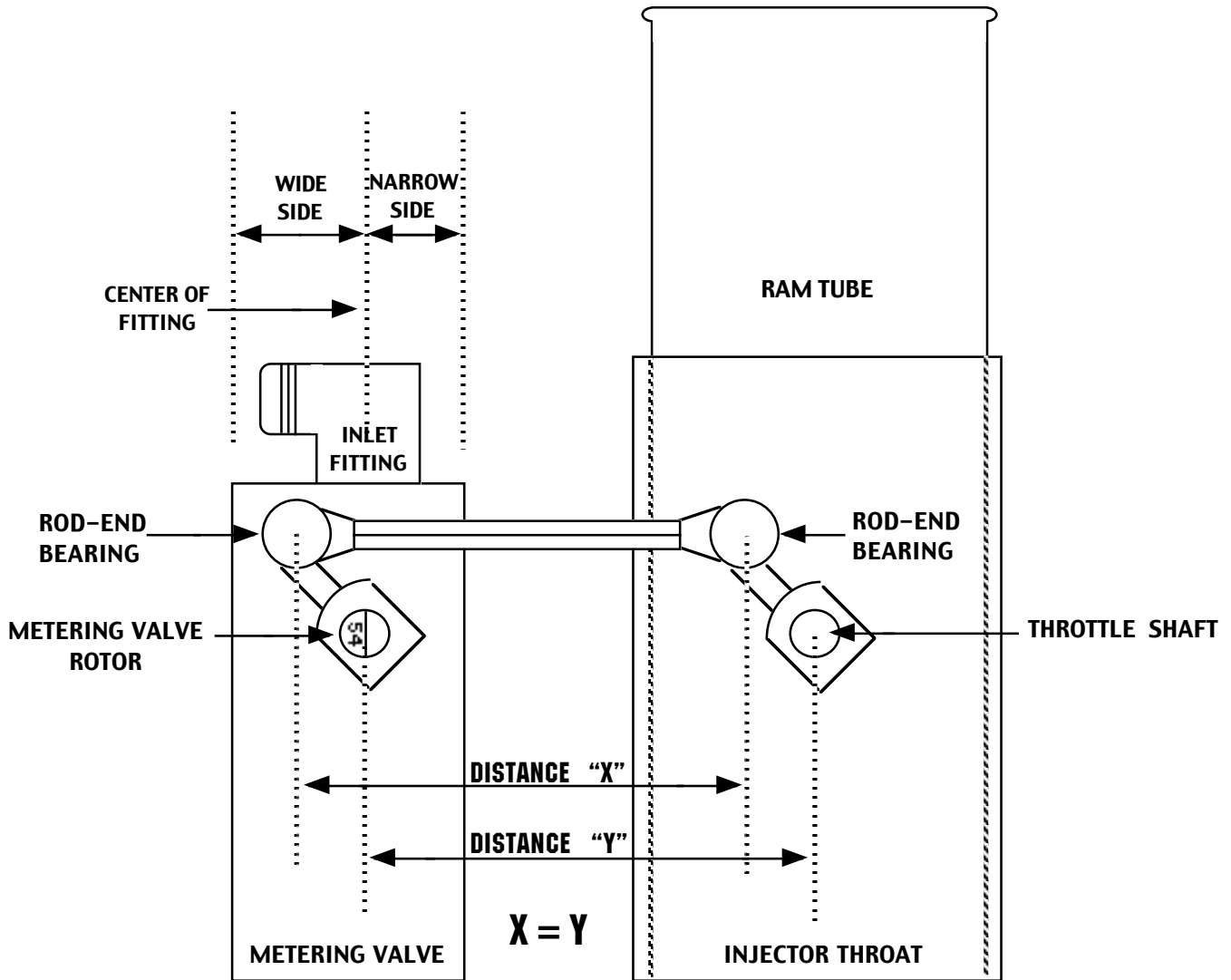


# METERING VALVE SCHEMATIC

DRAWING SHOWN IN WIDE OPEN THROTTLE



## TO SET THE METERING VALVE:

Set injector to wide open throttle. As pictured, the distance "X" between the center of the rod-end bearings is equal to the distance "Y" between the center of the throttle shaft and the center of the metering valve rotor (#54 shown). Note that the inlet fitting on the block is off-set to one side. Adjust the rotor so that the number is located on the wide side of the off-set. Tighten arm on the rotor and the throttle shaft.

## TO ADJUST THE METERING VALVE:

Since the idle mixture is controlled by the metering valve, the purpose of adjusting is to achieve a richer or leaner idle condition. The linkage between the valve and the throttle shaft consists of a threaded turnbuckle, one end has a right-handed thread and the other has a left-handed thread. Loosen both locknuts and turn the turnbuckle. To richen the idle, adjust the turnbuckle so that the arm on the metering valve moves in the open throttle direction. To lean the idle, reverse the procedure. One half to one turn should be ample. Retighten the locknuts.

REVISED 7/31/01

FUEL INJECTION ENGINEERING COMPANY INC., 22892 GLENWOOD DR., ALISO VIEJO, CA 92656  
PH (949)360-0909 • FAX (949)360-0991 • [www.hilborninjection.com](http://www.hilborninjection.com)